

Japanese Family Tree

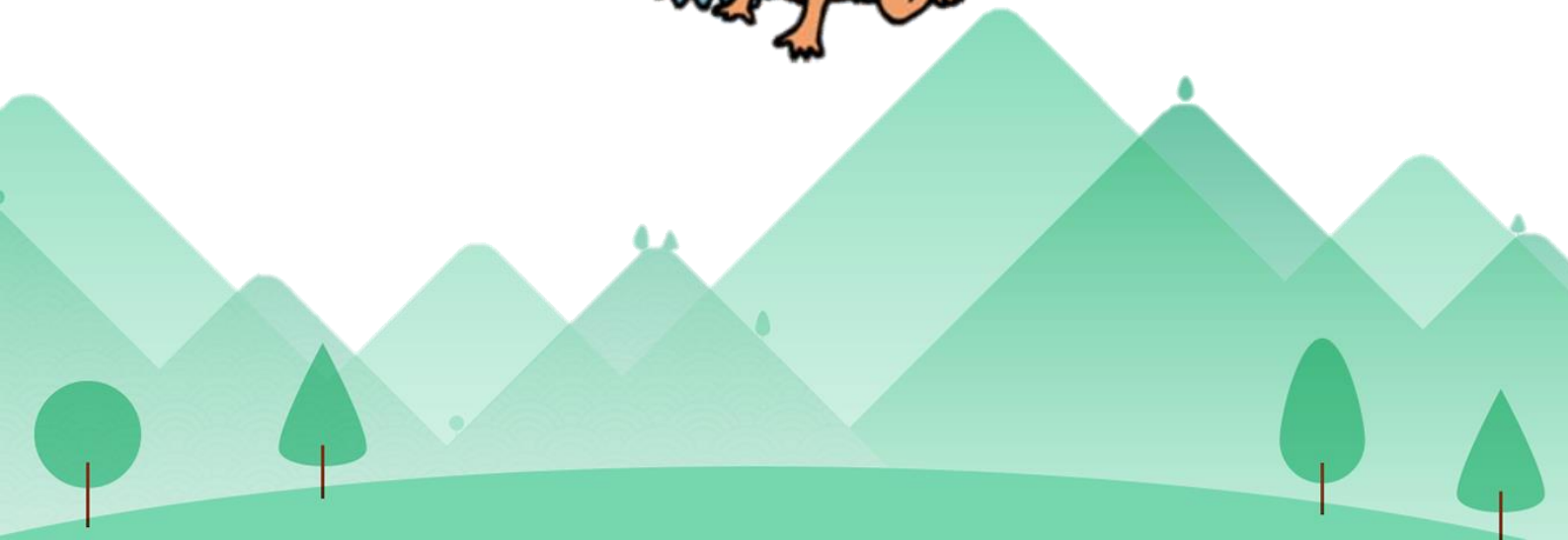
What to do:

Print a tree out for each student. There are three types of trees to choose from:

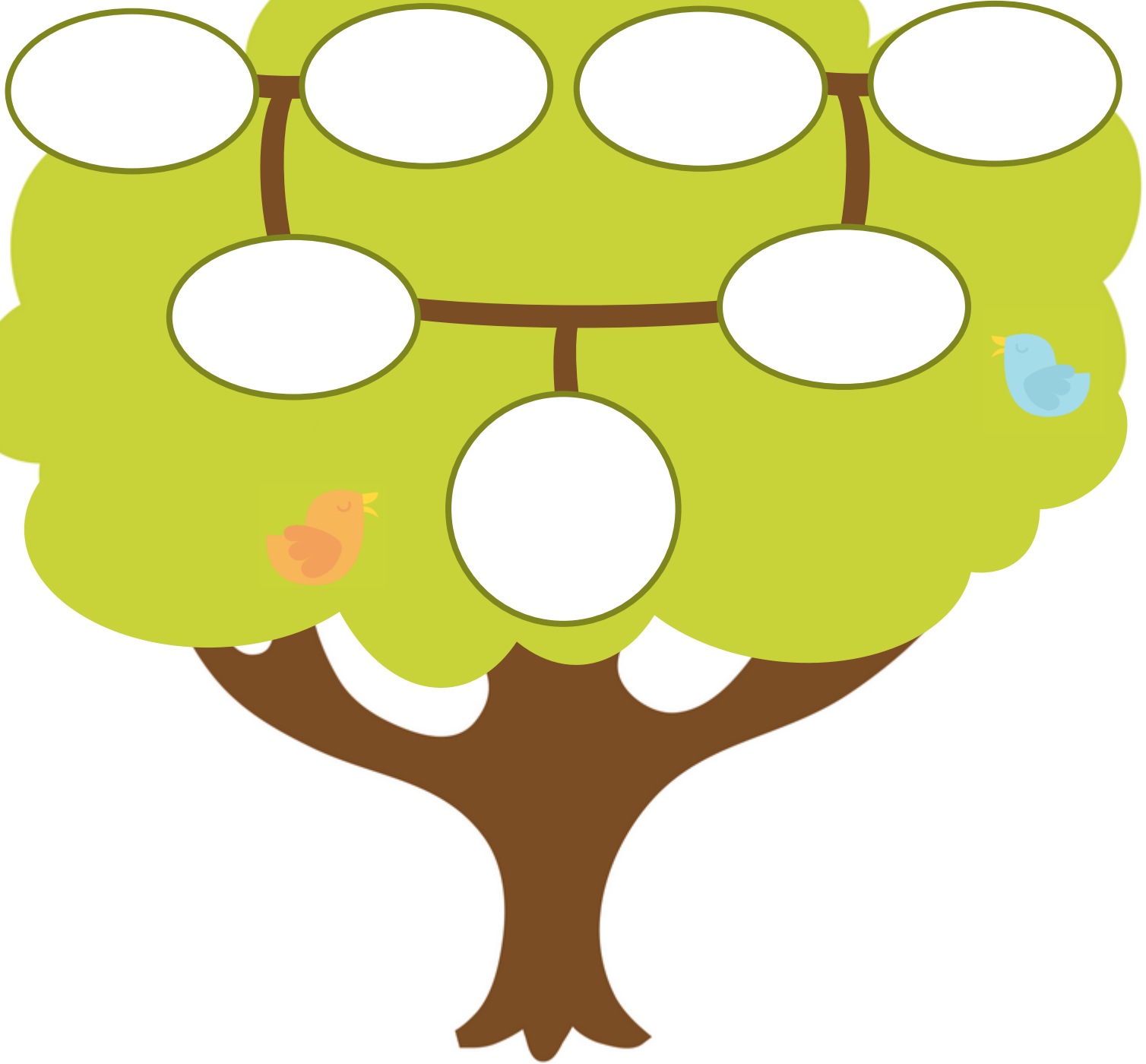
Tree 1 = a basic tree where students can write in the family member title including mother, father, grandmother, grandfather and themselves. Students can also include a small drawing or description of that family member.

Tree 2 = a blank tree giving students more freedom to expand and include additional members of their family. Students can write directly onto the tree or cut out and glue on the empty ovals provided.

Tree 3 = the same as tree 2 without the vocabulary support. This tree is a good opportunity for students to practice their dictionary skills.



私の家族



おかあさん



おとうさん



おばあちゃん



おじいちゃん

私の家族



おかあさん



おとうさん



いとこ



ペット



おじいちゃん



おじ



おにいちゃん



おば



おねえちゃん



おばあちゃん

私の家族



